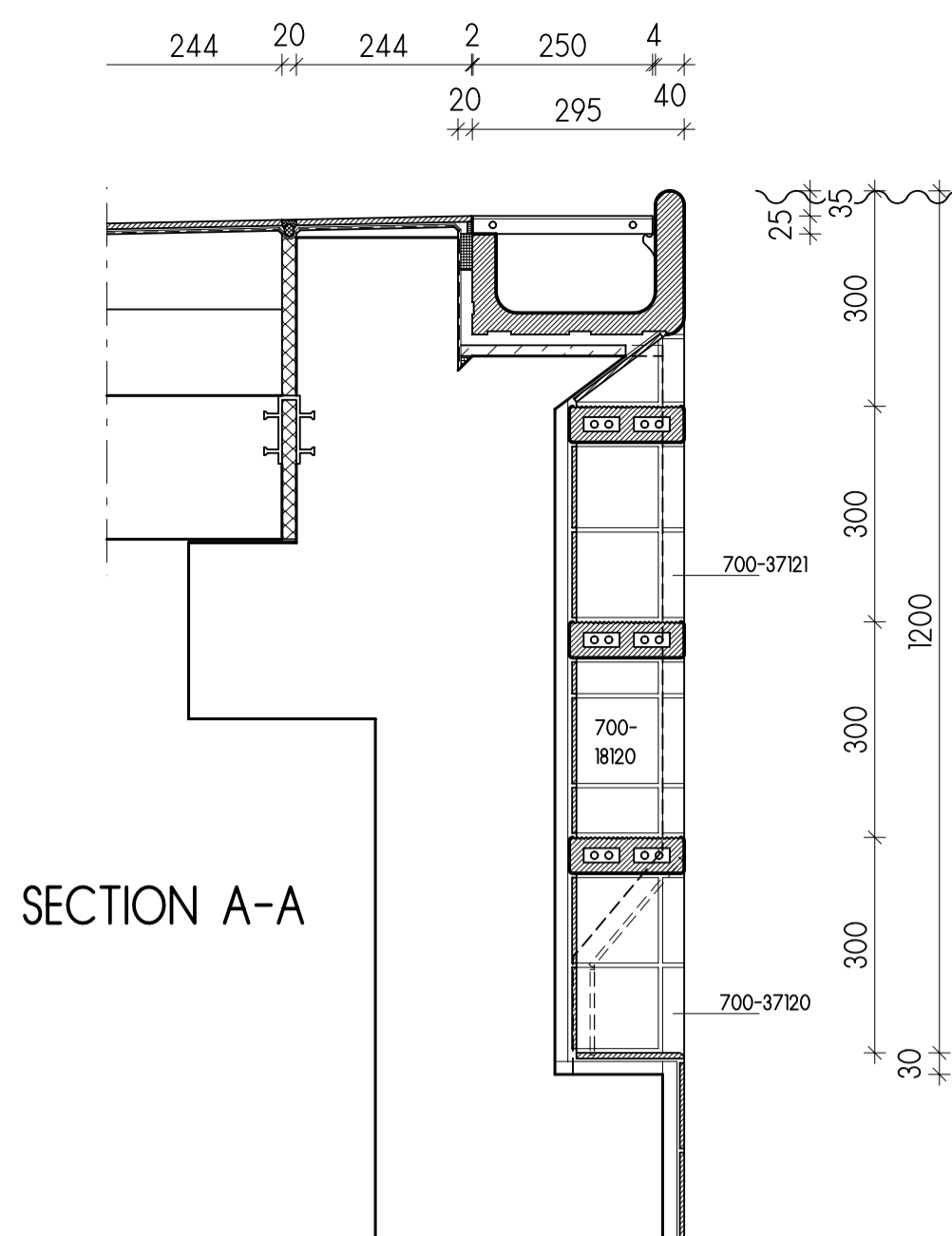
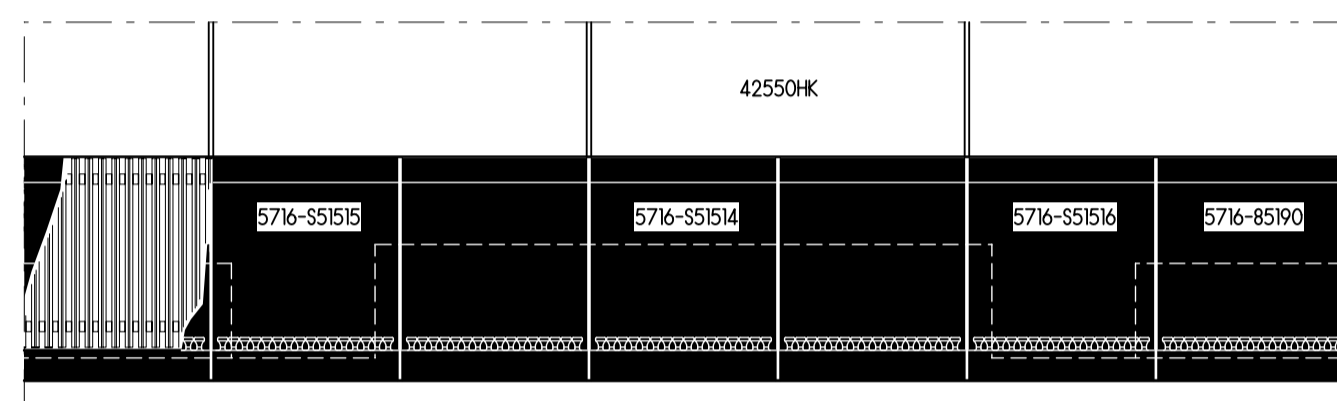


VIEW

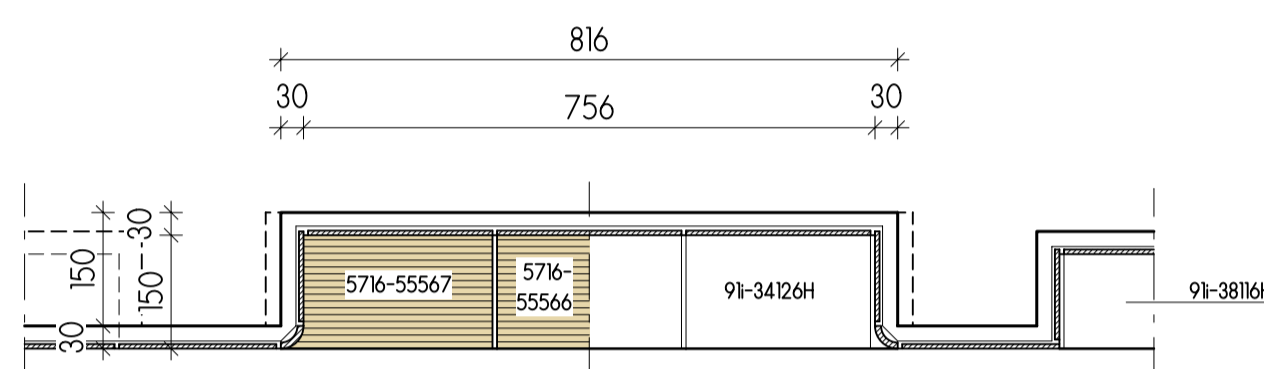


SECTION A-A

DETAIL 3 S: 1:10



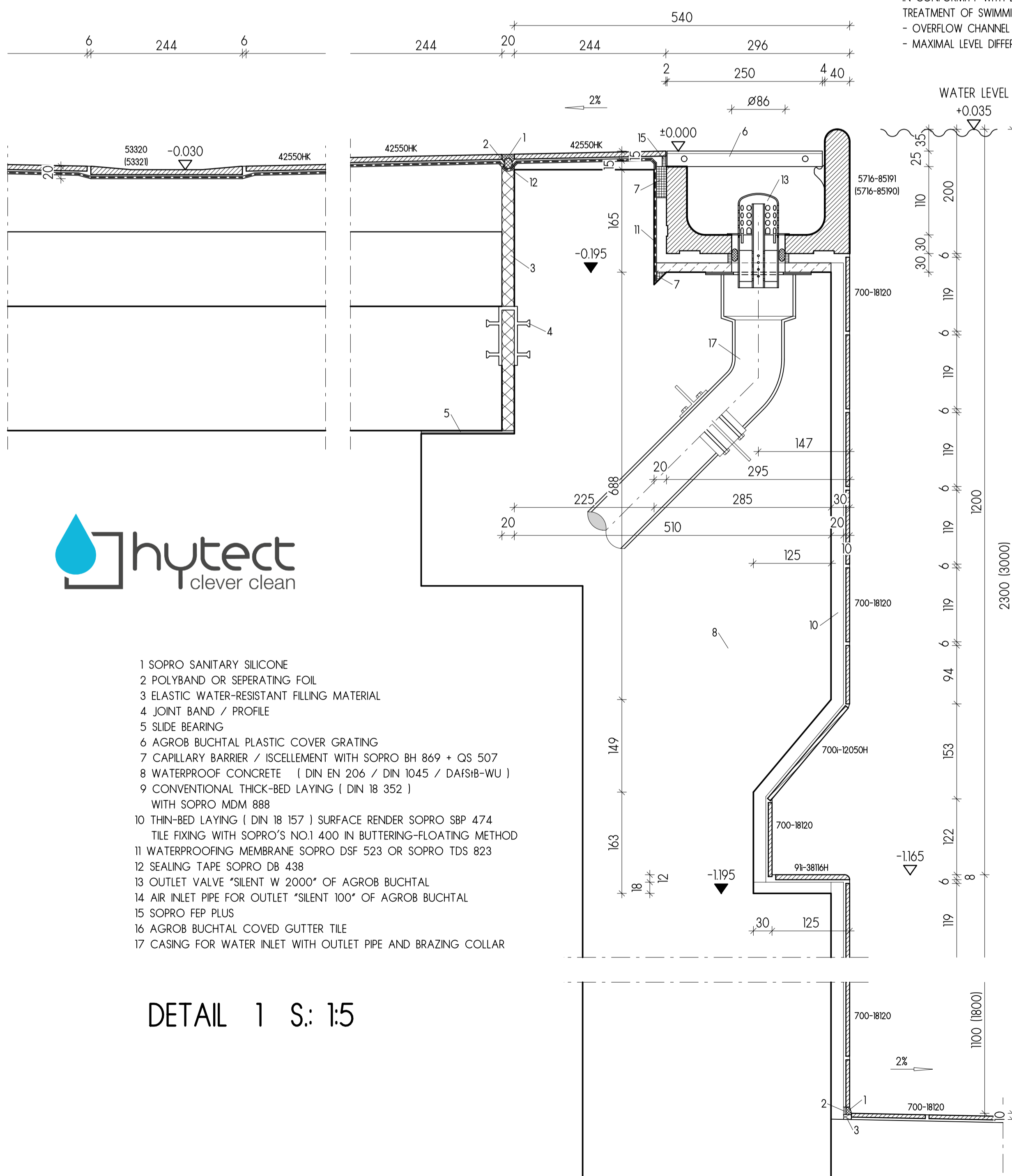
TOP VIEW



SECTION B-B

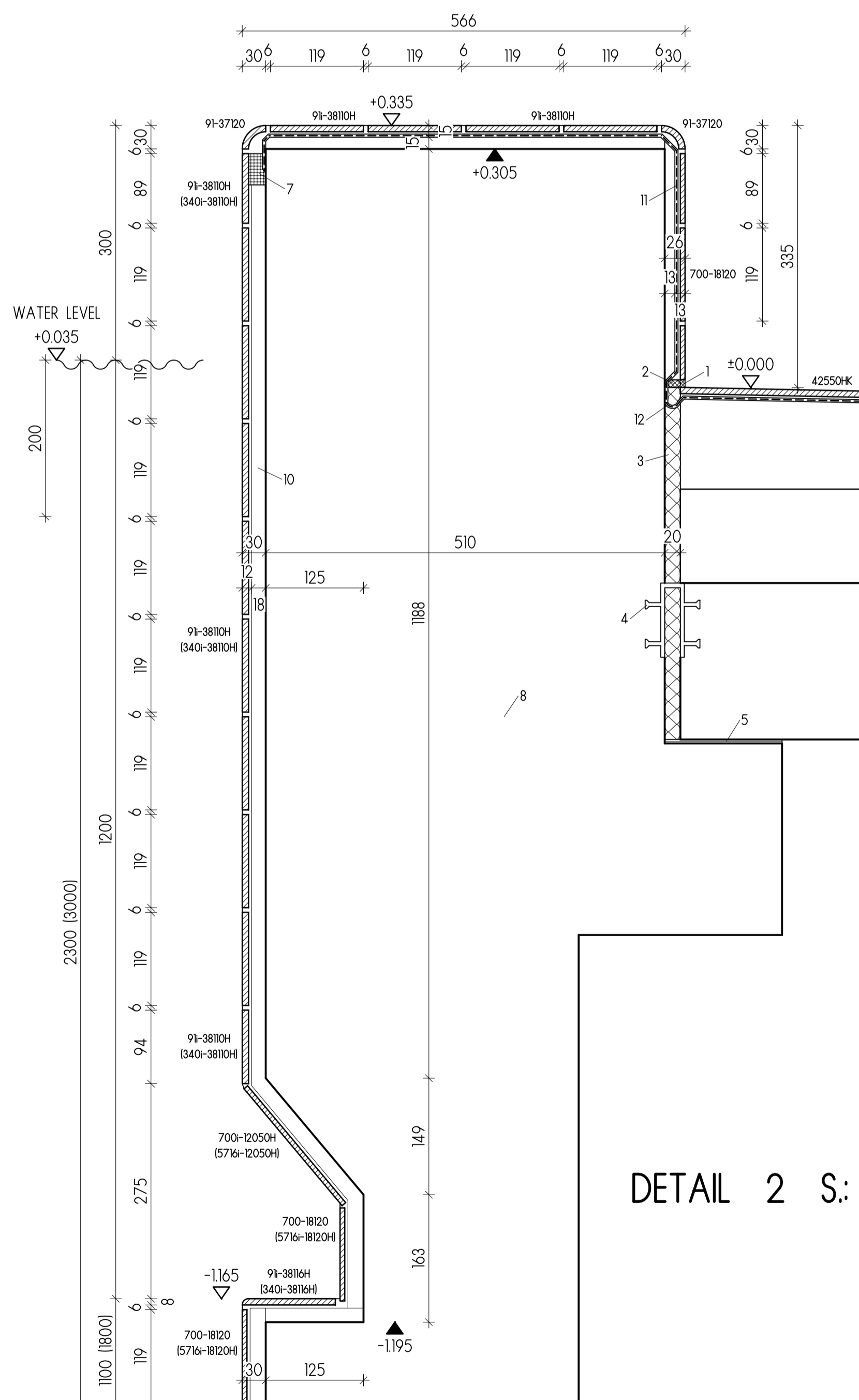
ACCORDING TO - DGUV-R 107 AND DIN EN 15289-1 - :
IN CASE OF ELEVATED WATER LEVEL THE POOL EDGE AND OVERFLOW EDGE
MUST BE CLEARLY VISIBLE!

IN CONFORMITY WITH DIN 19 643-1,
TREATMENT OF SWIMMING AND BATHING POOL WATER
- OVERFLOW CHANNEL AT ALL SIDES OF THE POOL
- MAXIMAL LEVEL DIFFERENCE ± 2 mm



- 1 SOPRO SANITARY SILICONE
- 2 POLYBAND OR SEPERATING FOIL
- 3 ELASTIC WATER-RESISTANT FILLING MATERIAL
- 4 JOINT BAND / PROFILE
- 5 SLIDE BEARING
- 6 AGROB BUCHTAL PLASTIC COVER GRATING
- 7 CAPILLARY BARRIER / ISCELLEMENT WITH SOPRO BH 869 + QS 507
- 8 WATERPROOF CONCRETE (DIN EN 206 / DIN 1045 / DAISB-WU)
- 9 CONVENTIONAL THICK-BED LAYING (DIN 18 352)
WITH SOPRO MDM 888
- 10 THIN-BED LAYING (DIN 18 157) SURFACE RENDER SOPRO SBP 474
TILE FIXING WITH SOPRO'S NO.1 400 IN BUTTERING-FLOATING METHOD
- 11 WATERPROOFING MEMBRANE SOPRO DSF 523 OR SOPRO TDS 823
- 12 SEALING TAPE SOPRO DB 438
- 13 OUTLET VALVE "SILENT W 2000" OF AGROB BUCHTAL
- 14 AIR INLET PIPE FOR OUTLET "SILENT 100" OF AGROB BUCHTAL
- 15 SOPRO FEP PLUS
- 16 AGROB BUCHTAL COVED GUTTER TILE
- 17 CASING FOR WATER INLET WITH OUTLET PIPE AND BRAZING COLLAR

DETAIL 1 S: 1:5



DETAIL 2 S: 1:5

Note of release:

This plan is just a recommendation and must only be used after release by the planner / architect commissioned by the building owner or approval by the direction of works authorised by the building owner!
AGROB BUCHTAL SOLAR CERAMICS GmbH expressly excludes liability for all kinds of damages which may result from the plans!
Without corresponding release the documents are used on the own responsibility and at the sole risk of the executive of construction works.

This plan has been examined, found correct and released for execution:

Place, date Stamp and signature

SWIMMING POOL PETYNKA CZ-PRAG

--- static movement joints / joints in the structure
--- additional movement joints in the ceramic covering
Movement joints are to be positioned according to static requirements and local conditions or in accordance with the instructions of the architect or responsible resident engineer. All movement joints, additional expansion joints in the covering etc., which are shown in drawings from the service for architects, shall be regard as recommendations only.
Our suggested methods of sealing are given for guidance only.
Binding instructions must be given by the architect or supervision of construction.
We recommend to use reaction resin for filling the joints in the whole pool head area, including channel. In case of chemical stresses caused by salt-, sea or thermal water, the entire pool should be jointed with reaction resin. It is absolutely necessary to follow the processing instructions given by the manufacturer / supplier.
The currently valid FINA rules as well as the regulations of the country in question have to be observed.
Number and position of channel outlets are to be fixed by the expert planner.
Our instructions concerning the cleaning of ceramic coverings have strictly to be observed.
The colour representation in this plan is non-binding and may partly considerably differ in reality!

Project No:
Building Project: Swimming pool 25.02 x 25.50m
Details 1 - 3
Planning: Projekty CZ, s.r.o.
40001 Usti Nad Labem, ul. Hradiste 96/8
Drawing No: 521656 -1 Date: 28.02.2025 design: G. Müller
Scale: 1:5 1:10 revised: design:
Head of team: M. Grüner revised: design:

All recommendations regarding the application and the technical use of our own products or of products manufactured by third parties are given without any engagement.
The selection of materials and their technical use are incumbent on the purchaser or his customer (executives or construction works, planners / architects commissioned by the building owner and direction of works).
The technical regulations (e.g. standards, codes of practice, product information etc.) have to be observed. We assume liability only for our products and refer to our General Terms of Sale and Delivery to which our liability conforms.
This drawing is protected by copyright.
It must not be duplicated or made accessible to third parties without our consent.

AGROB BUCHTAL

AGROB BUCHTAL SOLAR CERAMICS GmbH
Architektenservice
Buchtal 1
D-92521 SCHWARZENFELD
Telephone 0049 9435 391 - 3420
Telefax 0049 9435 391 - 3555
e-mail: architektenservice@agrob-buchtal.de